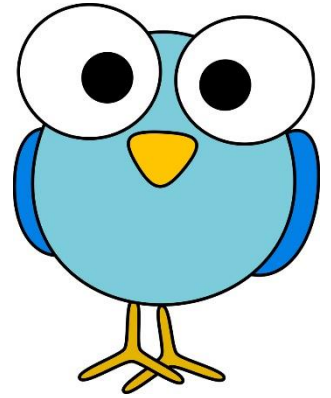


# Early Bird 2018-2019

Our Early Bird Program allows an earlier start for families who may need a more convenient drop-off time. Early Bird is from 7:30 - 9:00 a.m. Children will be in Playroom 2 enjoying a relaxed atmosphere and time to prepare for their preschool session. Children must be 3 years old by September 1<sup>st</sup> of the current school year to attend Early Bird. Children can pack a breakfast. A small snack will be offered to kids without a packed breakfast.



Children can be enrolled for a certain day(s) of the week, thereby reserving that spot for the year.



* RATES PER MONTH *	
1 day/week	\$60
2 days/week	\$120

\*\*For the 2018-2019 School Year, **Early Bird will only be offered on Tuesday and Thursdays** based on current enrollment. \*\*

### Drop-in spots are available!

- Reservations must be made by noon the previous day.
- The Drop-in cost is \$16 per day.

Enrollments are taken in the order they are received until the class is full. Early Bird tuition is refundable with a 30 day written notice. The day(s) selected are reserved for your child and cannot be traded for other days within the week, nor rescheduled/refunded due to absences, such as illness or vacation.

Unfortunately, Early Bird will be canceled if minimum enrollment requirements are not met. In the event of program cancellation, any prepaid tuition will be refunded in full.

If public schools and Aldrich are closed for the day or have a late start because of weather, Early Bird **will** be canceled, and there will be no refunds or make-ups.

### **DROP-OFF POLICY:**

Families arriving for will Early Bird should enter through Door 14 near the garden and go to Playroom 2. Drop off will begin at 7:30 a.m.

If you'd like to reserve a spot in Early Bird, please complete the form below and turn it in at the Aldrich office:

I have read & understand the above policies for Early Bird, including the drop-off policy:

Child's name \_\_\_\_\_ Class: \_\_\_\_\_

Early Bird 7:30-9:00am	Tuesdays	
	Thursdays	

Please list any allergies, medications, or special needs: \_\_\_\_\_  
(Please provide a separate epi-pen for Early Bird, if needed.)

Parent/Guardian Signature \_\_\_\_\_ Date: \_\_\_\_\_